



Holden Road, Woodside Park, N12 7EL
£625,000 Leasehold Council Tax Band F

REAL ESTATES
Est. 1981

Estate Agents · Residential Sales · Investments · Lettings

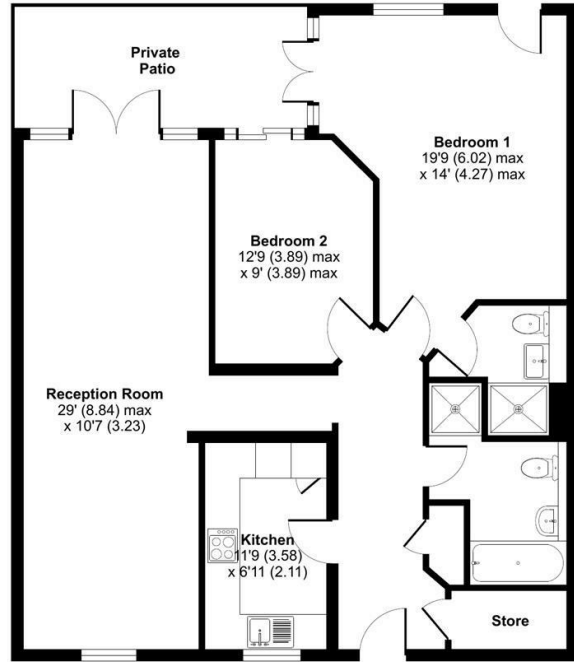
SOLD OFF MARKET A 2 BEDROOM, 2 BATHROOM GROUND FLOOR APARTMENT with PRIVATE PATIO in one of Woodside Park's most sought after developments.





Holden Road, London, N12

Approximate Area = 1000 sq ft / 92.9 sq m
For identification only - Not to scale



GROUND FLOOR

Certified Property Measurer
Floor plan produced in accordance with RICS Property Measurement Standards incorporating International Property Measurement Standards (IPMS Residential). © rics.com 2023. Produced for Real Estates - REF: 984599

Energy Efficiency Rating		Current	Potential
Very energy efficient - lower running costs	A		
Energy efficient - lower running costs	B	75	79
Decent energy efficiency - lower running costs	C		
Some energy efficiency - lower running costs	D		
Low energy efficiency - higher running costs	E		
Very low energy efficiency - higher running costs	F		
Least energy efficient - higher running costs	G		

EU Directive

